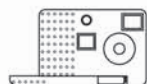


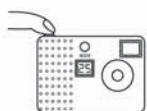
❖ How to Load the Batteries



- ① Slide open the battery cover on the bottom of your camera.
- ② Load the batteries according to the + - marks instructed, and replace the battery cover.

※ Chargeable batteries must not be used. We recommend using alkaline batteries.

❖ How to Take Photographs



- ① Switch on your camera
Press the MODE switch on your camera. You will hear a peeping sound, and the number of photographs you can take will be displayed.

- ② Take a photograph
Press the shutter button. You will hear a peeping sound, and the number of photographs actually taken will be subtracted from the number displayed on the LCD monitor. (For numbers higher than 100, (99) will be displayed.)

※ When it is too dark to take a photograph, you will hear two peeping sounds, and you will not be able to take your photographs. Try taking your photographs in a lighter place.

[Notice]

When replacing batteries, save your data in your computer beforehand. All data and settings saved in your camera will be deleted when batteries are replaced.

❖ Camera Functions ▶ You can switch the functions by a MODE button.



Photographing Modes

25	Mode for taking photographs You will be able to take the number of photographs displayed on the monitor. ※ For numbers higher than 100, (99) will be displayed.
oF	Power OFF mode When you press the shutter button in this mode, you will be able to switch the power off. If your camera is left untouched for 30~60 seconds after the power is switched on, it will automatically be switched off.
St	Mode for taking photographs using the self timer When you press the shutter button in this mode, you will hear short peeping sounds indicating the timer, and a photograph will be taken after 10 seconds.
dB	Mode for filming movies When you press the shutter button in this mode, you will hear repeating peeping sounds, and your movie will be saved. (The sound will not be saved.) Filming will end automatically if you release the shutter button, or the data memory is full.
C5	Continuous photographing When you press the shutter button in this mode, 3 photographs will be taken continuously.

Function / Setting Modes

CR	Deleting all data When you press the shutter button twice in this mode, all data will be deleted.
CL	Deleting one image When you press the shutter button in this mode, the image taken the latest will be deleted.
Hi	High resolution mode Your camera will be switched to a mode for large image size. If your camera is already on the high resolution mode, it will not be displayed.
Lo	Low resolution mode Your camera will be switched to a mode for small image size. If your camera is already on the low resolution mode, it will not be displayed.
Ld	Low compression mode High definition If your camera is already on the low compression mode, it will not be displayed.
Hd	High compression mode Low definition If your camera is already on the high compression mode, it will not be displayed.

[Notice]

You will not be able to recover the deleted data. We recommend saving the necessary data in your computer before deleting any data in your camera.

Number of photographs on the resolution mode and compression mode

	Low compression	High compression
High resolution mode Hi 640×480	Ld 25 枚	Hd 76 枚
Low resolution mode Lo 320×240	Ld 100 枚	Hd 275 枚

※ The initial setting will be high resolution × low compression 25. We recommend using your camera in this setting.

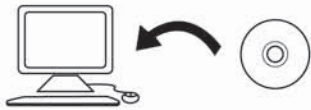
❖ How to Review your Images

You need to install the application in your computer, in order to forward the data of your images to your computer.

You need a computer installed with one of the following OS : Windows2000, XP, Vista, 7, and a CD-ROM drive in order to install the software.

■ How to Install the Application

Insert the attached CD to the CD drive of your computer, in order to install the application.



■ How to Download your Photograph / Movie Data

1. Connect your camera and your computer with the USB cable attached.

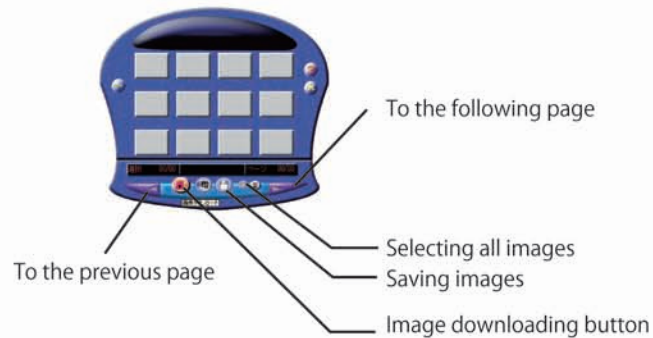
※ The application must be installed before the connection.



2. Open the [MyDSC2] folder produced on your desktop, and start the program by double clicking (MyDSC2).

3. Click the [Image downloading button], and download your photograph / movie data.

You will be able to enlarge the image by right clicking the photographs you want to see.



■ How to save your Photograph / Movie Data

Select the photograph / movie data you want to save (your choice will be marked in a red frame), click the image saving button in order to save your data in your computer.

※ You will be able to select all photograph / movie data by clicking the [selecting all images] button.